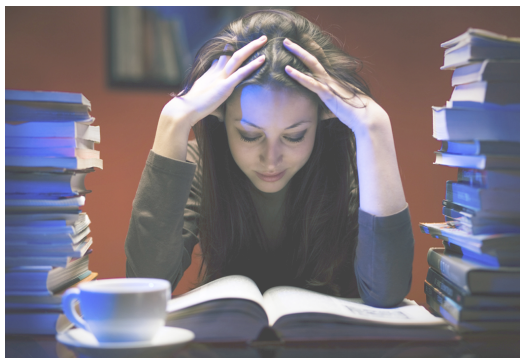


Tutoring • Test Prep • Assessment • Reading Specialists • Summer School • Homeschool

# Catholic High School Placement Test Prep

Students planning to attend a Catholic high school in the Louisville area in the 2012-2013 school year are required to take the High School Placement Test on Saturday, December 8 at the Catholic high school of their choice. Class placement and scholarship designations are primarily based on these test results. For the 22<sup>nd</sup> consecutive year, Educational Resources will offer a **TEST PREP** for students to aid them in maximizing their potential.

- TEST PREP** will improve the student's understanding of the following:
- test format
  - question types
  - guessing strategies
  - answer choice elimination methods
  - time management
  - anxiety reduction techniques



**DATES & TIMES:** 1) **Wednesdays, November 28 & December 5,**  
**6:15- 7:45** (class meets both Wednesdays)  
both Wednesdays)

2) **Saturday, December 1, 9:30 A.M. – 12:30 P.M.**  
3) **Sunday, December 2, 1:30 – 4:30 P.M.**

**WHERE: EDUCATIONAL RESOURCES**

6500 Glenridge Park Place, #1, Louisville, KY 40222  
(Located in the Glenridge Office Park behind Austin's restaurant in the 4800 block of US 42)

**FEE: \$135.00** Materials included. Nonrefundable fee.

*One-on-one instruction also available. Test Prep Manual with practice materials and review guidelines will be provided.*

*Class size is limited. Registration requires return of attached registration form plus fee.  
No telephone registrations.*

For further information, telephone 502.426.8002 or check out our website @ [www.ertutor.com](http://www.ertutor.com).

## TEST PREP FOR CATHOLIC HIGH SCHOOL PLACEMENT TEST

Student Name: \_\_\_\_\_ Phone: \_\_\_\_\_  
(last) (first)

Parent Name: \_\_\_\_\_

Address: \_\_\_\_\_  
(street) (city) (state) (zip)

E-mail: \_\_\_\_\_ Current School : \_\_\_\_\_

Mark your choice: 1)  **Wed, 11/28 & 12/5 at 6:15 P.M.** 2)  **Sat, 12/1 at 9:30 A.M.**  
3)  **Sun, 12/2 at 1:30 P.M.**

***One-on-one instruction available upon request.***

Make checks payable to: Educational Resources  
Return \$135.00 fee + registration form to: Educational Resources • 6500 Glenridge Park Place, #1 • Louisville, KY 40222  
[www.ertutor.com](http://www.ertutor.com)